

Who You Say I Am

(as published by Hillsong Music | original key - F#)

Words and Music by
Ben Fielding and Reuben Morgan

♩ = 58

VERSE

B \flat ⁵

Gm

F

B \flat ⁵



1. Who am I ____ that the high - est King would wel - come me.
2. Free at last, _ He has ran - somed me, His grace runs deep.

5

Gm

F

E \flat

Gm

F



I was lost _ but He brought me in. Oh, His love for me. Oh, His love for
While I was a slave to sin, Je - sus died for me. Yes, He died for

CHORUS 1 & 2

10

E \flat

B \flat

F

Gm

F



me. Who the Son sets free, oh is free in - deed. I'm a child of
me.

16

E \flat

B \flat

B \flat



God, yes I ____ am. ____ In my Fa - ther's

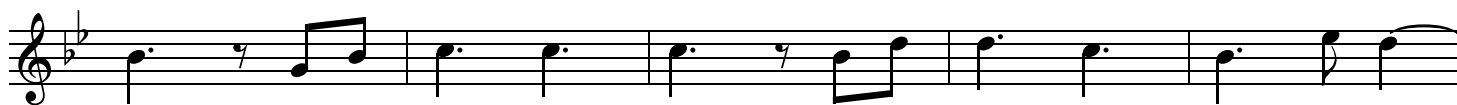
21

F

Gm

F

E \flat



house there's a place for me. I'm a child of God, yes I ____

CCLI Song # 7102401

© 2017 Hillsong Music Publishing Australia

For use solely with the SongSelect®. Terms of Use. All rights reserved. www.ccli.com

CCLI License # 20372740

BRIDGE

26 **B \flat** **Gm** **F/A**

— am. — I am cho - sen, not for - sak - en. I

30 **B \flat** **E \flat** **Gm** **F/A**

am who You say I am. — You are for me, not a - gainst me. I

34 **B \flat** **E \flat** **Gm** **F/A** Last time to Coda \oplus

1, 3, 4. 2, 5.

am who You say I am. — I am — (Oh) I am who You say I am. _

CHORUS 2

38 **E \flat** **B \flat** **F**

— Who the Son sets free, oh is free in - deed. I'm a
Fa - ther's house there's a place for me. I'm a

43 **Gm** **F** **E \flat** **B \flat** **B \flat**

1, 2. 3.

child of God, yes I — am. — In my — am. —
child of God, yes I — am. —

INSTRUMENTAL

48 **Gm** **F/A**

51 B \flat 1. E \flat 2. E \flat D.S. al Coda

I am

54 \oplus Coda E \flat Gm F/A E \flat CHORUS 2 B \flat

— Yes, I am who You say I am. — Who the Son sets
Fa - ther's

59 F Gm F

free, oh is free in - deed. I'm a child of
house there's a place for me. I'm a child of

63 E \flat 1. B \flat 2. B \flat

God, yes I _____ am. _____ In my _____ am. _____
God, yes I